

**SUGGESTED USE:** Place 2-4 mL in a nebulizer and inhale 2 to 3 times daily, or every 4-6 hours as needed, or as directed by your health care practitioner.

Sourced from **Organic Non-GMO** and Pharmaceutical Grade Manufactures **Free From Chemicals & Pesticides.**

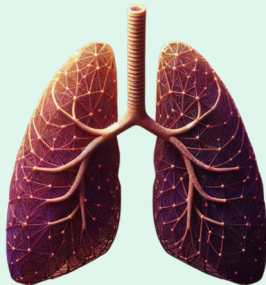
Ingredients may be produced in manufacturing facilities that produce other products which may contain soy, dairy, wheat, tree nuts, shellfish, fish, peanuts, and eggs, and may contain traces of all the above.

This product has not been evaluated by the Food and Drug Administration. This product is not intended to diagnose, treat, cure, or prevent any disease.

Keep out of reach of Children. Store in a cool dry place. Do not use if seal is broken. Product not for consumption.

**WARNING:** May have contraindications. Consult a physician before taking this product if you are taking medication or have a medical condition, nursing, or are pregnant. Do not use if you are allergic to any ingredients.

Manufactured and Distributed by:  
**GLYCO SYNERGY LLC**  
IDAHO 83524  
[glycosynergy.com](http://glycosynergy.com)  
(208) 228-9772



# NebuCore

## Nebulized Lung Support

G.E.N.E™ Technology



**GLYCO  
SYNERGY**

6 OZS / 177 ML

### Supplement Facts

Serving Size: 2 mL  
Servings Per Container: 59

Amount Per Serving	%DV
Proprietary Core Complex	1500 mg**

Ionic Colloidal Silver, Thyme Oil, Eucalyptus Oil, Ravensara Oil, Norway Spruce Oil, Juniper Berry Oil, Peppermint Oil, Black Seed Oil, Red Palm Oil, Nutmeg Oil, Rosemary, Sage, Oregano, Mullein, Ivy Leaf, Marshmallow Root, Quillaja Extract, Stinging Nettle, Echinacea, Sunflower Lecithin, Isomaltotoligosaccharide (IMO), Myo-Inositol, D-Mannose, Glucosamine HCL, Hyaluronic Acid, Chondroitin Sulfate, Beta Glucan, Red Marine Algae, Bladderwrack, Heal-All, Aloe Vera, Astragalus, Holy Basil, Cinchona Bark, Sweet Wormwood, Licorice Root, Skullcap, Kudzu, Lemon Balm, Chamomile, White Tea Extract, Theobromine, Bitter Orange, Curcumin, Ginger, Andrographis, Sophora Japonica, Butterbur, Pycnogenol, Piceatannol, Dan Shen, Acerola, Schisandra, Shiitake, Reishi, Turkey Tail, Flaxseed, Evening Primrose, Honey, Date Palm, Boswellic Acid, Bromelain, Serrapeptase, White Willow Bark, N-Acetyl Cysteine (NAC), Vitamin K2 MK-7, L-Lysine, Pink Himalayan Salt, Sodium Bicarbonate.

\*\* Daily Value not established

Other Ingredients: Proprietary Glyco Matrix Blend, Purified Water, Vegetable Glycerin.